



## BeamPro: EverSirius Ceiling Panel

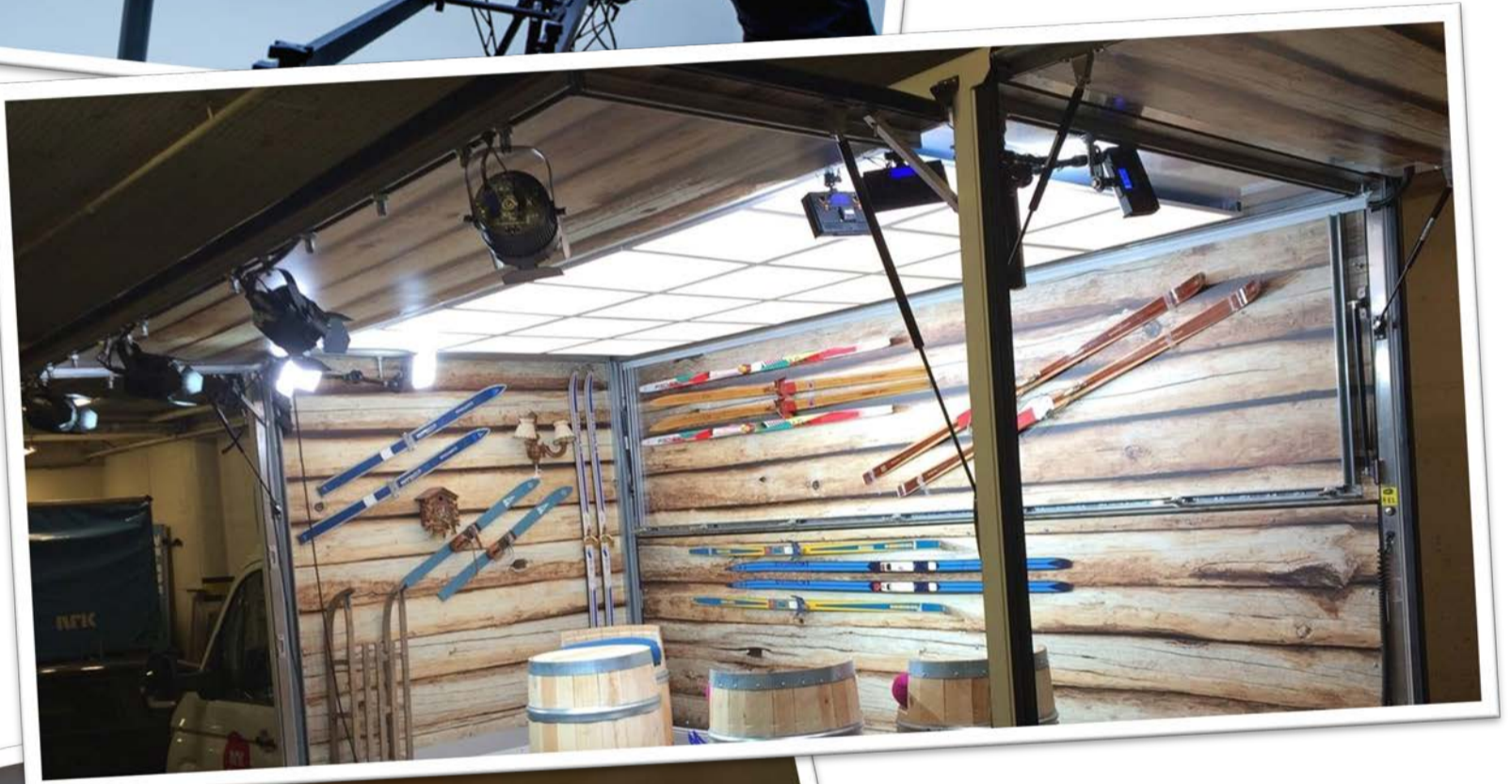
Professional light for low ceiling TV studios

Better light for video conference rooms and recording studios/classrooms



TWENTY STUDIOS in Sweden uses 40 panels to get 160,000 lumens. CRI Ra >95.

NRK (Norwegian national broadcaster) mounted 18 ceiling panels in their OB, and easily got uniform, shadow free light for outside broadcasting.



NRK's new way of using ceiling panels: When they are filming, these ceiling panels give them the light required, and meanwhile not appear in camera shots.

EverSirius ceiling panel BeamPro is originally designed for recording studios, in which the ceiling is usually low, not enough space for professional lighting fixtures. Then clients use BeamPro in many application scenarios with ceiling boards but require professional lighting, such as low ceiling TV studios, video conference rooms and lecture recording studios/classrooms, etc.

BeamPro is designed as professional lighting, different from other ceiling panels. It comes with the LED source CRI 95+ and TLCI 95+. Moreover, both brightness 0-100% and color temperature 2800K-6500K can be controlled by wired DMX or CRMX system by an external CRMX receiver. The two AC outputs on each controller have the panels powered by each other in parallel. When the panels matrix is installed, you can get completely shadowless, bi-color basic light.

## BeamPro INFO



### SPECIFICATIONS

Model	ECM 1000
Power	45W
CRI	Ra: 95+
TLCI	95+
CCT	2800K~6500K
Light source	SMD LED
Dimmer	0-100%
Beam angle	120°
DMX control	Channel 1: Dimming control; Channel 2: CCT control
USB output	5V 2A, Having the panel work with the CRMX system by an external CRMX receiver
AC output	2 outputs
Working voltage	AC 100-240V, 50-60Hz
Dimension	595 x 595 x 10 mm or customized
Weight	Panel: 2.6 kg; Controller: 1.2 kg
Included:	LED panel; Controller; power cable; DMX cable
Optional:	DMX512 controller

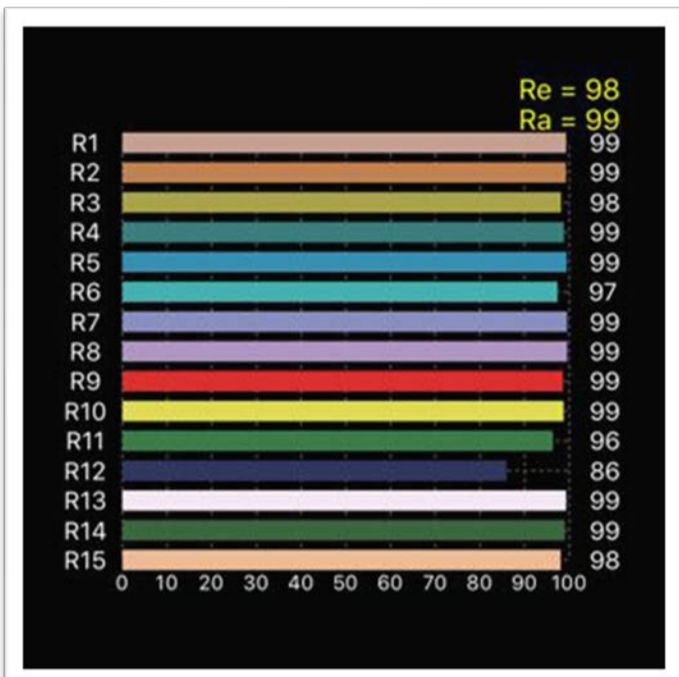
### ILLUMINANCE

CCT	5600K		4200K		2800K	
1m	1517lux	141fc	1428lux	133fc	1322lux	123fc
2m	435lux	40fc	422lux	39fc	382lux	35fc



How it works

# LIGHT TESTING DATA



### TLCI/TLMF metadata report #2

Test colour	Q value
Dark skin	99.34
Light skin	99.92
Blue sky	99.98
Foliage	99.85
Blue flower	98.51
Bluish green	99.93
Orange	99.95
Purplish blue	99.59
Moderate red	99.99
Purple	99.63
Yellow green	100.00
Orange yellow	99.94
Blue	98.70
Green	100.00
Red	99.99
Yellow	99.99
Magenta	99.96
Cyan	99.91
White 90.01%	96.91
Neutral 8.59.1%	97.83
Neutral 6.5.36.2%	98.54
Neutral 5.19.77%	99.09
Neutral 3.5.9%	99.51
Black 3.13%	99.78
Result Qa value	99.56
CRI (Ra)	98.81
CQS	97.88
Illuminance	1175.00 lux

Sector	Lightness	Chroma	Hue
R	0	0	0
R/Y	0	0	0
Y	0	0	0
Y/G	0	0	0
G	0	0	0
G/C	0	0	0
C	0	0	0
C/B	0	0	0
B	0	0	0
B/M	0	0	0
M	0	0	0
M/R	0	0	0

### Record

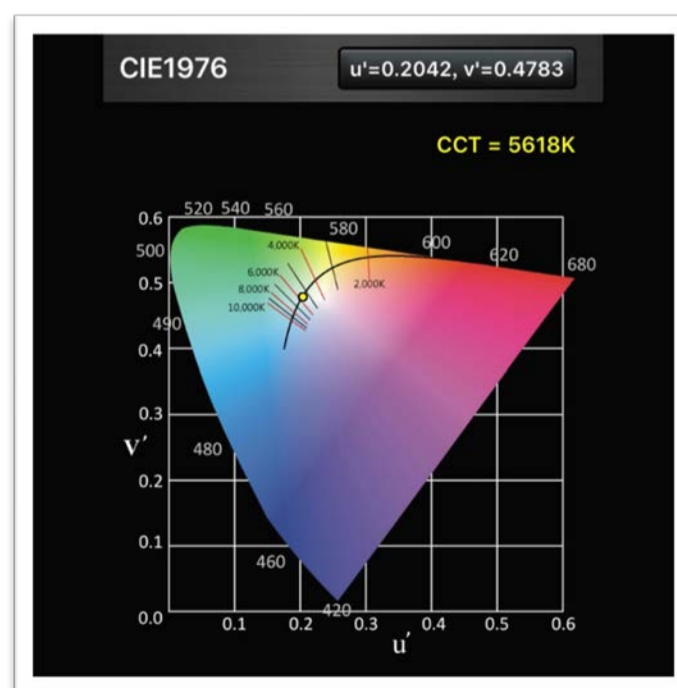
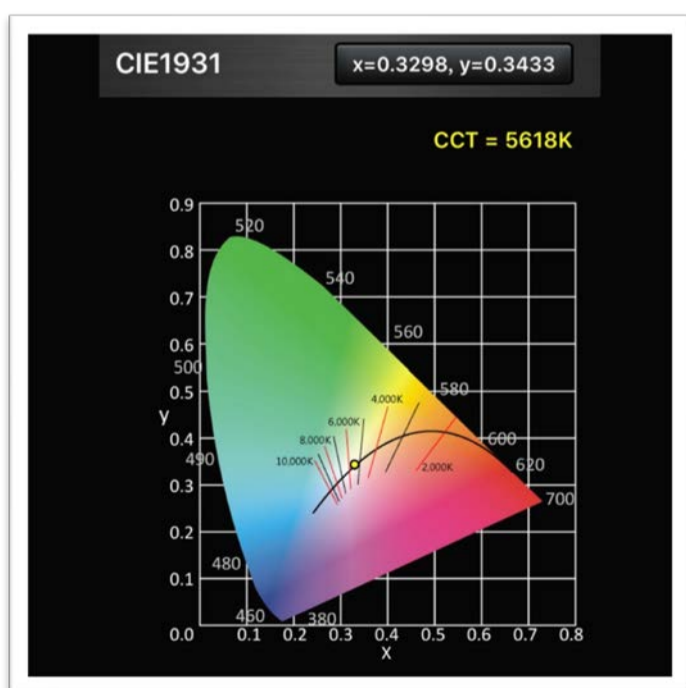
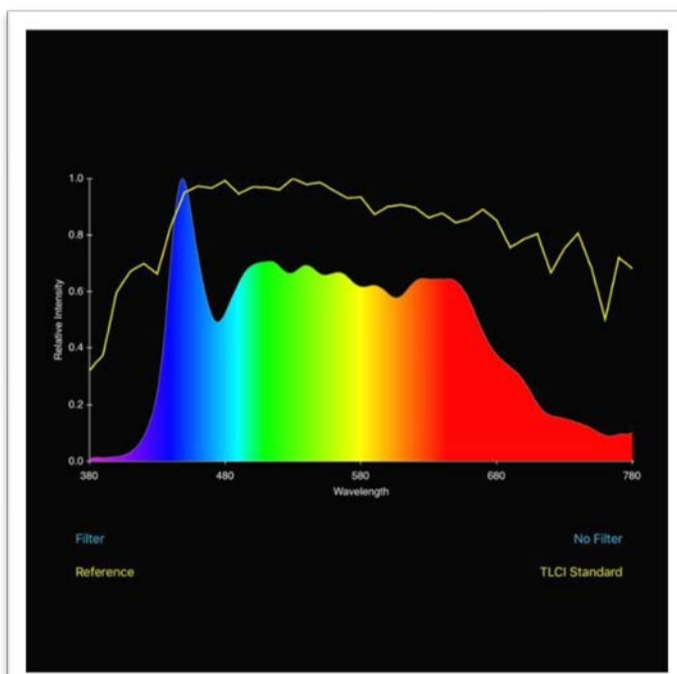
CCT(K)	D 5665 K (+0.1)
Illuminance(lux)	1175
TLCI-2012	99.6
CRI(Ra)	99
CQS	98
Tint	+212

### +Filter

Name	No Filter
------	-----------

### Reference

Name	TLCI Standard
------	---------------



## HOW TO INSTALL?

Easy as pie. 3 ways to pick up:

**1. The simplest and recommended way:** Put the panels in the frame of drop ceiling to replace ceiling boards.



**2. Messenger wire installation**



**3. Surface mounted**



Please feel free to contact us if you need any further details or instructions.

[www.eversirius.com](http://www.eversirius.com)  
[sales@eversirius.com](mailto:sales@eversirius.com)

